

Warrior

Specification

Material

This bollard has the option of materials. The hybrid version has a cast iron head and base with a solid soft / hard wood body and door or the complete bollard can be cast in grey iron or ductile SG Iron. The lens is polycarbonate and can be either clear, frosted or opal.

Ingress Protection

IP 44 Optical Compartment , IP 44 Gear Compartment

Finishes

Natural finish to both materials or the cast bollard can be Polyester Powder Coated any BS or RAL colour or stoving acrylic paint to any colour.

Optics

Can be fitted with the Candela Symmetrical Louvre or LED's are fitted with variety of optical lenses

Gear

Sodium and CDMT-T	50w Max
Metal Halide	50w Max
Cosmopolis	45w Max
Compact Fluorescent	70w Max

LED Aray

3w - 24w

Maintenance

Gear is mounted on a back board and accessed via the door. The lamp is accessed by removing the lid casting.

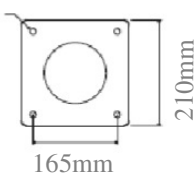
Photo Electrical Cell

The fitting accepts miniature Photo Electrical Cells as an option

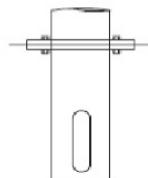
Fixing Details

The fitting come with the option of integral root , 'J' bolts and template or Fabricated root

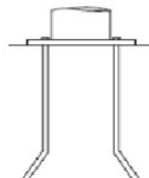
16mm



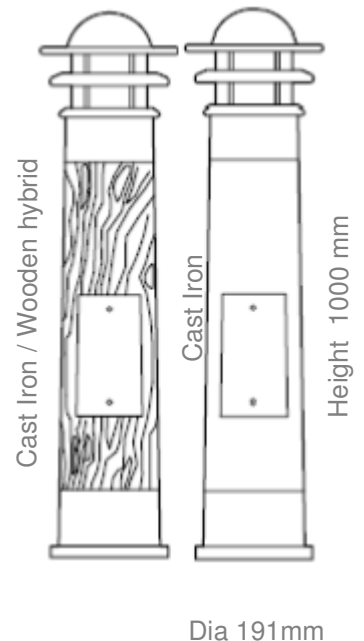
Base Flange
*suggested fixings



Fabricated root
(option)



J-Bolt (option)



319, Long Acre, Nechells, Birmingham, UK. B7 5JT

Tel 0121 678 6700 Fax 0121 678 6701

Email: sales@candela.co.uk Web: www.candela.co.uk

Candela Light is a trading name of Candela Traditional lighting Limited Design Right subsisting in the design of articles shown herein are the property of Candela Traditional Lighting Limited



candela

L I G H T